

July 2013 Real Estate Newsletter - <http://www.thelandman.net/june-2013-newsletter.html> | PDF version



888-696-8695

OPEN

Personal Showings
Including Most Holidays

**Vacant Land
Residential Homes
Land Contracts
Log Homes & Cabins
Waterfront & Access**

www.TheLandman.net

July 2013 **Landman Realty LLC Real Estate Newsletter**. You will not only find some of our featured properties located in Central Wisconsin but also other area information, local wildlife and useful tools like [Acreage Calculator](#).



Custom Log Home

JUST LISTED! 3 bd, 2 ba, full finished basement, 2 matching log garages on 3 lots in Crystal Brook Woods. Part ownership in 157 acre

Nature Conservancy with hiking trails open to golf carts and creek frontage, plus... **\$299,900.**



Private Campground

12+ Wooded Acres on a class trout stream (500'+ ft) with 2 campers, well, septic and multiple electric posts. Hiking / ATV trails already

cut and groomed throughout the property. The area offers plenty of public land, fishing lakes, ATV routes.... **\$54,900.**



Featured Wisconsin Real Estate Developments and Subdivisions like [Dellwood](#) (left) and [Petenwell Landing](#) (right). Here you will find maps, photos, documents, descriptions, real estate plus general description of not only the development but the area as well.



<http://www.thelandman.net/real-estate-developments-in-wisconsin.html>

Quality Built Home

Located close to Castle Rock Lake by Petenwell Rock. This 2 bd, 3 ba home has a full finished basement w/a large recreational room, extra room for an office, cathedral ceilings over living room, kitchen and dining area. Back patio & attached garage **\$175,000.**



4+ Ac w/Well & Camper

Electric too! Priced to sell fast. This wooded property is your turn-key summer piece of recreational heaven. Located minutes from several excellent fishing lakes, on ATV routes & Snowmobile Trails close to thousands of acres of public land. **\$34,900.**





Castle Rock Lake is Wisconsin's 4th largest inland body of water and is surrounded by recreational real estate. Castle-Rock-Lake.com is loaded with Lake information including subdivisions, maps, photos, real estate, documents and more! Enjoy the watching the Wildlife around the Lake and in the Central Wisconsin Area.



Lakefront Cabin for Sale

Big Roche-A-Cri Lake - 3 bd, 2 ba, full finished basement, fireplace, wrap around deck with a dock on the back side of the lake where ALL the wildlife hang out; Geese, Osprey, Deer, Turtles, Fish & more... **\$199,900.**



Affordable Getaway Cabin

2 Bedroom, 1 Bath, with sheds including one setup like a bunkhouse all on 1.5 acres in Trout Valley. This area is loaded with Wisconsin Wildlife, Lakes, Trout Streams & Public Land. Make an Offer **\$49,900.**



Red Fox & Turkey Vultures

Red Fox - The *Wisconsin Vulpes Vulpes* better know as the Red Fox is one of our most beautiful animals. If you get the chance to see one nearby, take a... Checkout the new fox pups playing video from Spring 2013 - <http://www.wisconsin-wi.com/red-fox.html>

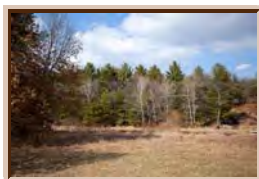
Turkey Vultures - Central Wisconsin is filled with many Turkey Vultures soaring through the sky looking for their next tasty meal. Many people have become frightened by this enormous bird; however, there is nothing to be afraid

of... <http://www.wisconsin-wi.com/turkey-vultures.html>



1 ac w/ Well, Septic, Electric

HOT PROPERTY ALERT! Located minutes close to Lake Petenwell, Wisconsin River plus Castle Rock Lake now just pull your camperin , hookup and start enjoying the wildlife drinking from the neighbors pond. **PRICED TO SELL! \$19,900.**



160 Diverse Wooded Acres

Located just minutes from I-39/51 for easy access. This property features a wildlife pond, large pine and oaks loaded with Deer, Turkeys and small game. Enjoy the privacy and seclusion that comes from owning your own large acreage. **\$1,800 per Acre.**



IDXWI.com is a website with currently over 90,000 Wisconsin Properties for Sale scraping 7 MLS IDX feeds. You can search by map, price range, area, detailed advanced search setup





custom email auto searches all in a simple quick loading format.



Riverfront - By "The Dells"

2+ Wooded Acres with river frontage plus part ownership in 38 acre conservancy with a large pond. Camping is allowed & power is

installed.

\$29,900. 888-696-8695



LAND CONTRACTS

Several Land Contracts to choose from starting at **\$14,900.**

Includes several 5 & 10 Acres parcels which allow camper right by

Lake Peterwell close to both the Town & County Parks

Checkout our 4th of July [Brochure](#)! Also follow us on [Twitter](#), [Facebook](#), [Google+](#) & [Youtube](#)!