

June 2013 Real Estate Newsletter - <http://www.thelandman.net/june-2013-newsletter.html> | PDF version



**888-696-8695**

**OPEN**

**Personal Showings**  
Including Most Holidays

**Vacant Land  
Residential Homes  
Land Contracts  
Log Homes & Cabins  
Waterfront & Access**

**[www.TheLandman.net](http://www.TheLandman.net)**

Here's the long anticipated **Landman Realty LLC Real Estate Newsletter**. You will not only find some of our featured properties located in Central Wisconsin but also other area information, local wildlife and useful tools like [WI County GIS Maps](#).



#### Lakefront Cabin for Sale

Big Roche-A-Cri Lake - 3 bd, 2 ba, full finished basement, fireplace, wrap around deck with a dock on the back side of the lake where ALL the wildlife hang out; Geese, Osprey, Deer, Turtles, Fish & more... **\$199,900.**



#### 160 Diverse Wooded Acres

Located just minutes from I-39/51 for easy access. This property features a wildlife pond, large pine and oaks loaded with Deer, Turkeys and small game. Enjoy the privacy and seclusion that comes from owning your own large acreage. **\$1,800 per Acre.**



Did you know that Landman Realty LLC has a **Wisconsin Real Estate Development** and Subdivision section on our website? Most of the current developments posted are in Adams County so far. You will find maps, photos, documents, descriptions and real estate. [Northern Bay](#) (left) [Crystal Brook Woods](#) (right).



<http://www.thelandman.net/real-estate-developments-in-wisconsin.html>

#### 5 Acres with HUGE Trees

Camp right by Lake Petenwell under these massive oak and pines. Owner is offering a LAND CONTRACT. This property is on the ATV Routes & Snowmobile Trails. **\$32,500.**



#### Dock Space Castle Rock

Land Contract - 1/2 an acre right by Castle Rock Lake with deeded dock space just a couple hundred feet away from this wooded property. Close to a boat launch. **\$19,900.**



**Lake Petenwell** is Wisconsin's 2nd largest inland body of water





and is surrounded by recreational real estate. Home to lots of Wisconsin Wildlife. [Lake-Petenwell.com](http://Lake-Petenwell.com) is loaded with Lake information including subdivisions, maps, photos, real estate, documents and more!



**Log Home - Land Contract**

This Modern Day Rustic Log Cabin has 3 bd, 2 ba, has a stone fireplace, 4 season porch, lots more... On 157 nature conservancy on creek! Call! **\$235,000.**



**10 Acres with Camper**

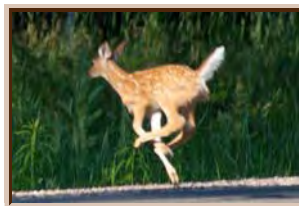
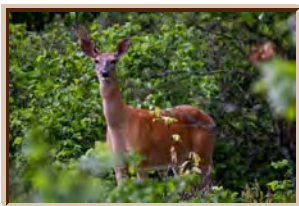
New listing with more acreage available. 10 rolling acres with a large camper on top of the hill. No neighbors within eyesite. Must See! **\$37,900.**



**Wisconsin Whitetail Deer**

Whitetail Deer are one of the animals that you will frequently see in Wisconsin. They are abundant! You will find them all over the state. They get to be about 71" long and 31" high up to their shoulders. The weight between the males and females differ. The bucks (males) are larger and weigh around 150 pounds. The females (does) only weigh 110 when full-grown. They have thin bodies that give them many advantages. A deer's long, slender legs help them to run up to 30 mph and allow them to jump fences that are 9 feet tall!

<http://www.wisconsin-wi.com/whitetail-deer.html>



**4+ Ac w/Well & Camper**

Electric too! Priced to sell fast. This wooded property is your turn-key summer piece of recreational heaven. Located minutes from lots of fishing lakes. **JUST LISTED CALL! \$34,900.**



**SECLUDED & PRIVATE**

This newer ranch style home is 1/3 of a mile off the road with a long gravel driveway. Full Basement, Garage, Sunroom, Hardwood Floors, Master Bathroom, Porch, +++ **\$224,900.**



[Adams-WI.com](http://Adams-WI.com) is a website featuring Adams County, Wisconsin Lakes, Townships, Events Calendar, Local Directory, News Forum and much much more... You will see area photos, videos and maps of Adams County and learn more about the wonders of our beautiful area.



**Fixer-Upper Priced to Sell**

Just Listed 3 Bd, 2 ba  
Doublewide home with LAKE  
RIGHTS is partly remodeled.  
Finish and save! **\$37,900.**

888-696-8695

**Riverfront - By "The Dells"**

2+ Wooded Acres with river frontage  
plus part ownership in 38 acre  
conservancy with a large pond.  
Camping is allowed & power is

installed. **\$29,900.**

Checkout our Memorial Day Brochure! Also follow us on [Twitter](#), [Facebook](#), [Google+](#) and [Youtube!](#) Visit our new Wisconsin IDX website with over 88,000 Wisconsin properties for sale. [www.idxwi.com](http://www.idxwi.com)

Landman Realty llc - June 2013 Newsletter - 888-696-8695 | [www.TheLandman.net](http://www.TheLandman.net)