

May 2014 / Memorial Day Weekend Real Estate Newsletter - <http://www.thelandman.net/may-2014-newsletter.html> | PDF version



888-696-8695

OPEN

Personal Showings
Including Most Holidays

**Vacant Land
Residential Homes
Land Contracts
Log Homes & Cabins
Waterfront & Access**

www.TheLandman.net

May 2014 - Memorial Day Weekend - Landman Realty LLC Real Estate Newsletter.

We are getting lots of new inventory right now so check out the June Newsletter which is right around the corner, or feel free to give us a call at 888-696-8695 or just watch our website!

Currently #3 Help us get back to #1 by Clicking on the Total Real Estate Solutions icon to vote!



For a full list our properties visit <http://www.thelandman.net/Properties.html>

To search 87,000+ Wisconsin real estate visit <http://www.idxwi.com>



40 Acres with Cabin

This diverse 40 Acres has some Oaks, Row Pine, Wild Pine, Rock Outcroppings, Trails, Meadows and lots of Wildlife. Previously divided into 4 parcels & is being sold together. PRICED TO SELL at \$140,000.



Home + Garage

Beds: 2 Baths: 2 Ft²: 840 Lot Acres: .38 County: Adams County Region: Village of Friendship
Affordable | Near Friendship Lake | Walk to Fair Grounds, Lake, Hospital & Shopping | [Mobile Home for Sale](#). PRICED TO SELL at \$34,900.



HOT! HOT! HOT! http://idxwi.thelandman.net/i/Wisconsin_Log_Homes_for_Sale This is one of our most popular webpages with over 60,000 page views since it was created 9 months ago! Here you'll find a wide variety of Log Cabins and Log Homes for Sale throughout the entire State of



Wisconsin.

5000 Acres of Public Land

Located near I-39/51 for easy access. This 2 Bdrm, 1 BA. is a very well maintained, year round or getaway home. It features a large pole shed on 4 acres adjoining Colburn Wildlife Area. This is home to abundant Deer, Turkey & Small Game: **\$69,900.**



ACREAGE ON PRIVATE LAKE

6+ scenic acres on Hill Lake with over 600' of frontage & a dock. Build your dream home here. Walk-out basement is possible on this gently rolling terrain. Gorgeous waterfront land. Seller may finance. **\$54,900.**



Are you looking for Real Estate in and around **City of Adams & Village of Friendship**? At this website you'll find a variety of properties including Houses, Land, Lots, Mobile Homes & Commercial Properties. You'll also find information on Friendship Lake, Friendship Park, Friendship Mound & more...



Getaway Cabin under 50K

2 bdrm, 1 ba furnished cabin on 1.5 wooded acres with 2 Large sheds about 10 mintues away from both Lake Petenwell & Castle Rock Lakes. This Property includes deeded access to Roche-A-Cri Creek. Possible LAND CONTRACT : **\$49,950.**



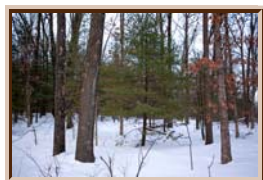
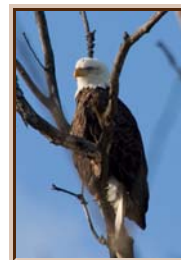
Home - Garage - 20 Acres

You will love this 3 bedroom, 2 bath home nestled into the Pine & Hardwood forest. Located very close to Castle Rock Lake, the 4th largest body of water in Wisconsin. Enjoy boating, fishing, swimming, sailing on the water or just kick back and relax and take in nature from the screened-in 3 season porch. **\$174,900.**



Wisconsin Wildlife Come see some of the animals for yourself! On this webpage you can find general information on some of Wisconsin's Wildlife including Photos & Videos of Bald Eagles, Whitetailed Deer, Wild Turkey, Largemouth Bass, Trout, Raccoons and more...

Also check out [Type of Wisconsin Fish!](#)

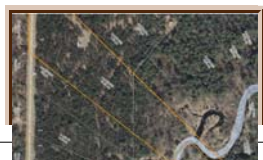


LOW DOWN LAND CONTRACT

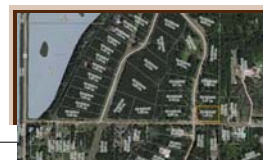
Very affordable, gorgeous, heavily wooded, gently rolling land that is loaded with mature oaks and pines! Abundant wildlife right in your backyard! One of the very few parcels that still allows camping or mobile homes. It's located in the Neenah Creek Watershed area... **\$7,500.**

LAKEFRONT LOT

Possible Land Contract! Camping is Allowed (but regulated). This parcel comes with a deeded boat slip & does have the standard 100' set back that most of Lake Petenwell Waterfront lots have. This property is located in [Petenwell Landing](#) close to the County Park. PRICED TO SELL!!! **\$39,900.**



Real Estate Tool - Acreage Calculator - What is an Acre? A unit of area in the U.S. Customary System, used in land and sea floor measurement and equal to 160 square rods, 4,840 square



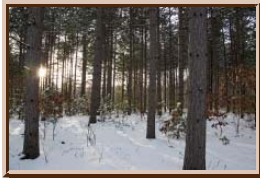


yards, or 43,560 square feet.



15+/- Wooded Acres

Pine & Hardwood Forest | Camping Allowed | Vacant Buildable Land | Wisconsin Dells Area | Nearby watersports fun | This gorgeous mature majestic Pine and Oak mixed forest is centrally located between.... **NEW LISTING! PRICED TO SELL - \$44,900.**



Well, Septic & Electric

1+/- Acre in a prime fishing location just a few minutes from Wisconsin River, Lake Petenwell and Castle Rock Lake. This area has plenty of boat launches, ATV routes, Snowmobile Trails, Horseback Riding Trails and Public Land. **PRICE REDUCED \$18,900.**



Lake-WI.com This is the time of year people start looking for their waterfront getaway property for the season. Here you'll find waterfront properties throughout the entire state of Wisconsin organized by County, Map and Region.



Follow us on [Pinterest](#), [Twitter](#), [Facebook](#), [Google+](#) & [Dailymotion](#)!

Landman Realty llc deems information accurate but does not guarantee accuracy of information. All material information must be independently verified by buyer, agents & buyers agents.

Landman Realty llc - May / Memorial Day Weekend 2014 Newsletter - 888-696-8695 | www.TheLandman.net

{unsubscribe}Unsubscribe{/unsubscribe}