

September 2013 Real Estate Newsletter - <http://www.thelandman.net/september-2013-newsletter.html> | PDF version



**888-696-8695**

**OPEN**

**Personal Showings**  
Including Most Holidays

**Vacant Land  
Residential Homes  
Land Contracts  
Log Homes & Cabins  
Waterfront & Access**

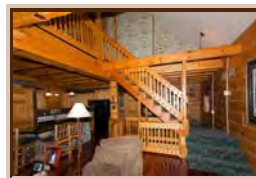
**[www.TheLandman.net](http://www.TheLandman.net)**

September 2013 **Landman Realty LLC Real Estate Newsletter**. Fall is almost here and buyers are thinking about higher interest rates, moving before winter and the approaching hunting season. This Newsletter features our Popular *Central Wisconsin Properties, WI Developments, Friendship Lake, Wisconsin Panfish* websites and our new *IDX Search website - IDXWI.com that has been recently upgraded!* **Voted #1 of the Top 100 Popular Real Estate Websites!**



#### Land Contract - \$5,000.

Dutch Hollow Lake! Enjoy the views of the hills and valleys in South Central Wisconsin. This deeded lake access lot offers rights to Green Space, Club House, Pool, Sandy Beach, Boat Launches, Tennis Courts, Campground and more... **\$5,000.**



#### Luxury Log Home

Crystal Brook Woods - Luxury Full Log home w/3 bd, 2 ba, fully finished basement, 2 matching log garages on 3 lots in Crystal Brook

Woods. Part ownership in 157 acre Nature Conservancy with hiking trails open to golf carts and creek frontage, plus... **\$299,900.**



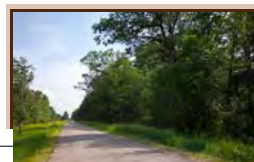
Featured are **Wisconsin Real Estate Developments** and Subdivisions like **Bakers Valley** (left) & **Pourchot's Subdivision** (right). Here you will find maps, photos, documents, descriptions, real estate for sale plus general descriptions not only of the developments but of the area as well.



<http://www.thelandman.net/real-estate-developments-in-wisconsin.html>

#### Hunting Acreage for Sale

Located just minutes from I-39/51 for



#### AFFORDABLE HOME for Sale



easy access. This property features a wildlife pond, large pine and oaks loaded with Deer, Turkeys and small game. Enjoy the privacy and seclusion that comes from owning your own large acreage. Invest in your future now! **\$1,800 per Acre.**



2 Bedroom, 2 bath Mobile Home on a Double Lot & 1.5 Car Garage located right by Moundview Hospital just minutes from Friendship Lake, Friendship Park, Friendship Mound and Roche-A-Cri State Park **\$39,900.**



**Friendship Lake** is about 115 acres, is open to water skiing and has a popular sandy beach on State Highway 13 north of Adams-Friendship. <http://www.adams-wi.com/friendship-lake.html> is loaded with Lake information including subdivisions, maps, photos, real estate, documents and more! Enjoy watching the Wildlife around the Lake in Central Wisconsin Area.



**Petenwell Lake Lot**

Bring the fishing rods, boat and your agenda for water sports fun on beautiful Lake Petenwell, the 2nd largest body of water in Wisconsin!

In an area of abundant wildlife. Lots of public land to bird-watch, hike and explore are just minutes away. ATV routes and snowmobile trails,... **\$72,900.**



**CAMP HUNT FISH +++**

Possible LAND CONTRACT 12+ Wooded Acres on a class trout stream with 2 campers, well, septic and multiple electric posts. Hiking

/ ATV trails already cut and groomed throughout the property. This area offers plenty of public land, fishing lakes, ATV routes,... **\$54,900.**

**Wisconsin Panfish**



There are eleven different varieties of *panfish in Wisconsin*. Those include **Rock Bass, Green Sunfish, Pumpkinseed, Warmouth, Orange spotted Sunfish, Bluegill, Long ear Sunfish, Yellow Perch, White Crappie, and the Black Crappie.** Wisconsin is known for its abundance of delicious fish, especially the panfish. You can pretty much go to any decent sized body of water in the state and catch your nightly dinner during the appropriate fishing seasons. The bluegill is the most popular of the panfish weighing

up to 4lbs. You will generally find them in lakes that are 60-85 degrees, murky water... <http://www.wisconsin-wi.com/panfish-in-wisconsin.html>



**Home by Castle Rock Lake**

3 Bd | 2 Bath | 1904 sq ft | Lot Size:



**Remodeled Home for Sale**

3 Bd | 2 Ba | Newly remodeled



150 x 130 | Lot Acres: 0.44 | Large Pole Building | 2 Wells | Beautiful



Trees | You will love the location of this lovely well-kept home. It's just a few short blocks from Castle Rock Lake & not far from the County Park **\$95,500.**

home | Free Standing Stove | Hardwood Flooring | Tile Flooring |



Close to Castle Rock Lake | Close to boat launch | 2 golf courses nearby | This is an awesome location for those of you who want to be surrounded by... **\$85,900.**



**IDXWI.com** NEW & IMPROVED! Yes! Our new Wisconsin IDX Website had a massive software upgrade to be more Smartphone and Tablet friendly plus several core updates for a more user friendly interface. This site has over 140,000 page views since this past February 2013. **What is IDX?**



### Creekfront on 5+ Acres

Waterfront Lot | Buckner Creek | Hardwoods | Public Land This beautifully wooded waterfront parcel is priced below assessed value! 5.5+ acres w/mature pines & hardwoods & is very private. It has a variety of... **\$24,950.00**



### Hunting Cabin

8+ Wooded Acres with a primitive hunting cabin right by public land on ATV & Snowmobile Trails in an area with filled with fishing lakes and creeks. Additional Acreage Available! **\$54,900.**

Checkout our [Labor Day Weekend Brochure!](#) Follow us on [Pinterest](#), [Twitter](#), [Facebook](#), [Google+](#) & [Dailymotion!](#)

Landman Realty llc deems information accurate but do not guarantee accuracy of information. All material information must be independently verified by buyer, agents & buyers agents.

Landman Realty llc - September 2013 Newsletter - 888-696-8695 | [www.TheLandman.net](http://www.TheLandman.net)