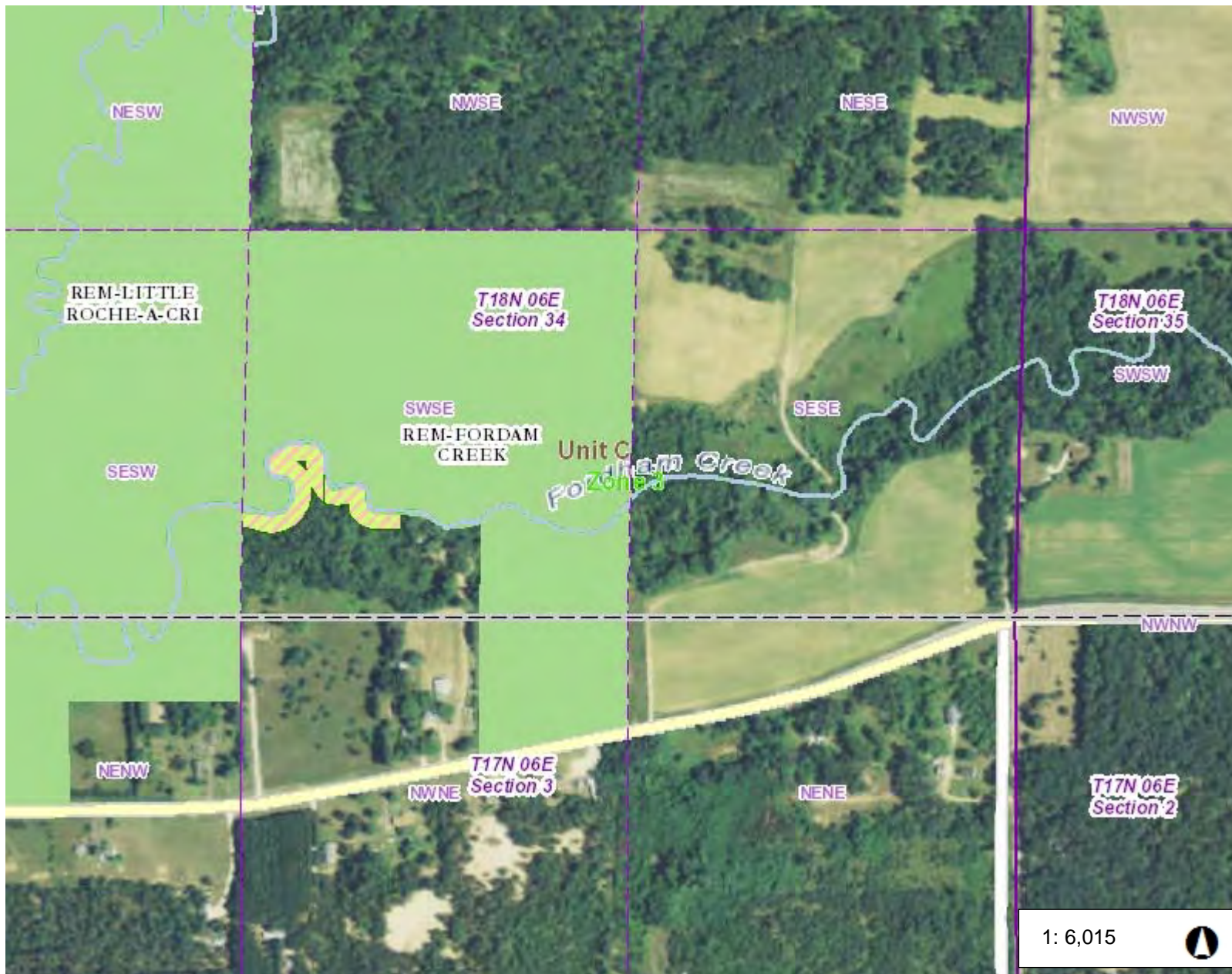
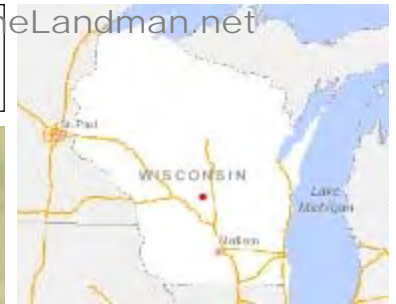




888-696-8695

# Landman Realty LLC Rem-Fordam Creek

www.TheLandman.net



## Map Features

- Bear Zones
- Turkey Zones
- DNR Parking Area
- Shore Fishing Site
- Boat Access Sites
- CARRY-IN
- RAMP
- UNKNOWN
- Stewardship Grant Acquisition:
- PLSS Town & Range
- PLSS Sections
- PLSS Quarter-quarter Sections
- Board of Commissioners of Pu
- State Natural Area Parcel Own
- WI DNR
- Federal
- County/City/Town
- Non-Gov't Conservation Org
- Education Institution
- US Fish & Wildlife Service
- US Forest Service
- National Park Service
- Trout Waters**
  - CLASS I
  - CLASS II
  - CLASS III

1: 6,015



## Notes

0.2 0 0.09 0.2 Miles

NAD\_1983\_HARN\_Wisconsin\_TM  
© Latitude Geographics Group Ltd.

DISCLAIMER: The information shown on these maps has been obtained from various sources, and are of varying age, reliability and resolution. These maps are not intended to be used for navigation, nor are these maps an authoritative source of information about legal land ownership or public access. No warranty, expressed or implied, is made regarding accuracy, applicability for a particular use, completeness, or legality of the information depicted on this map. For more information, see the DNR Legal Notices web page: <http://dnr.wi.gov/org/legal/>

888-696-8695

Landman Realty LLC

www.TheLandman.net