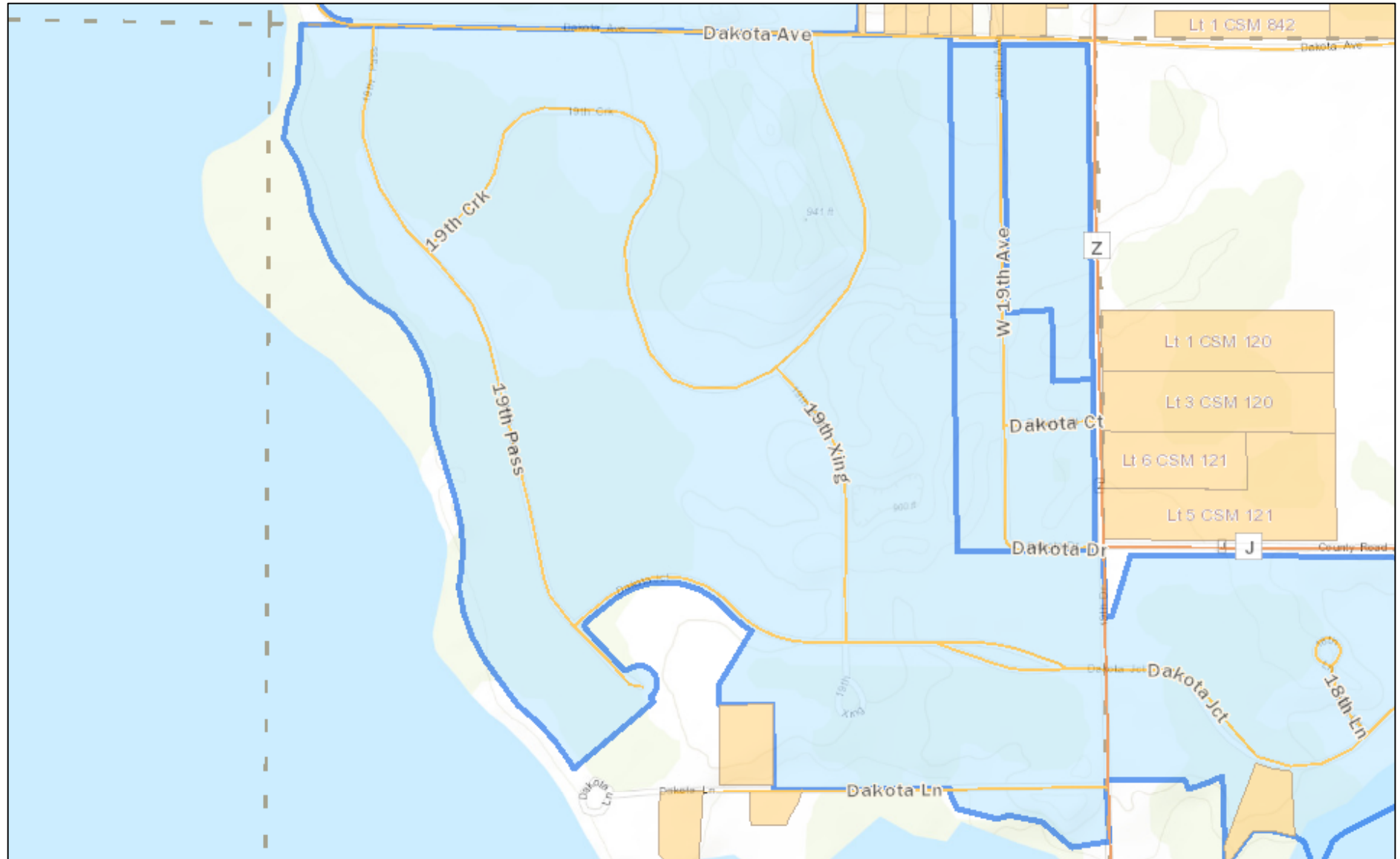


## Timber Shores 1



9/6/2019, 10:28:20 AM

Esri Canada, Esri, HERE, Garmin, INCREMENT P, Intermap, USGS, METI/NASA, EPA, USDA | Adams Co.

1:13,000

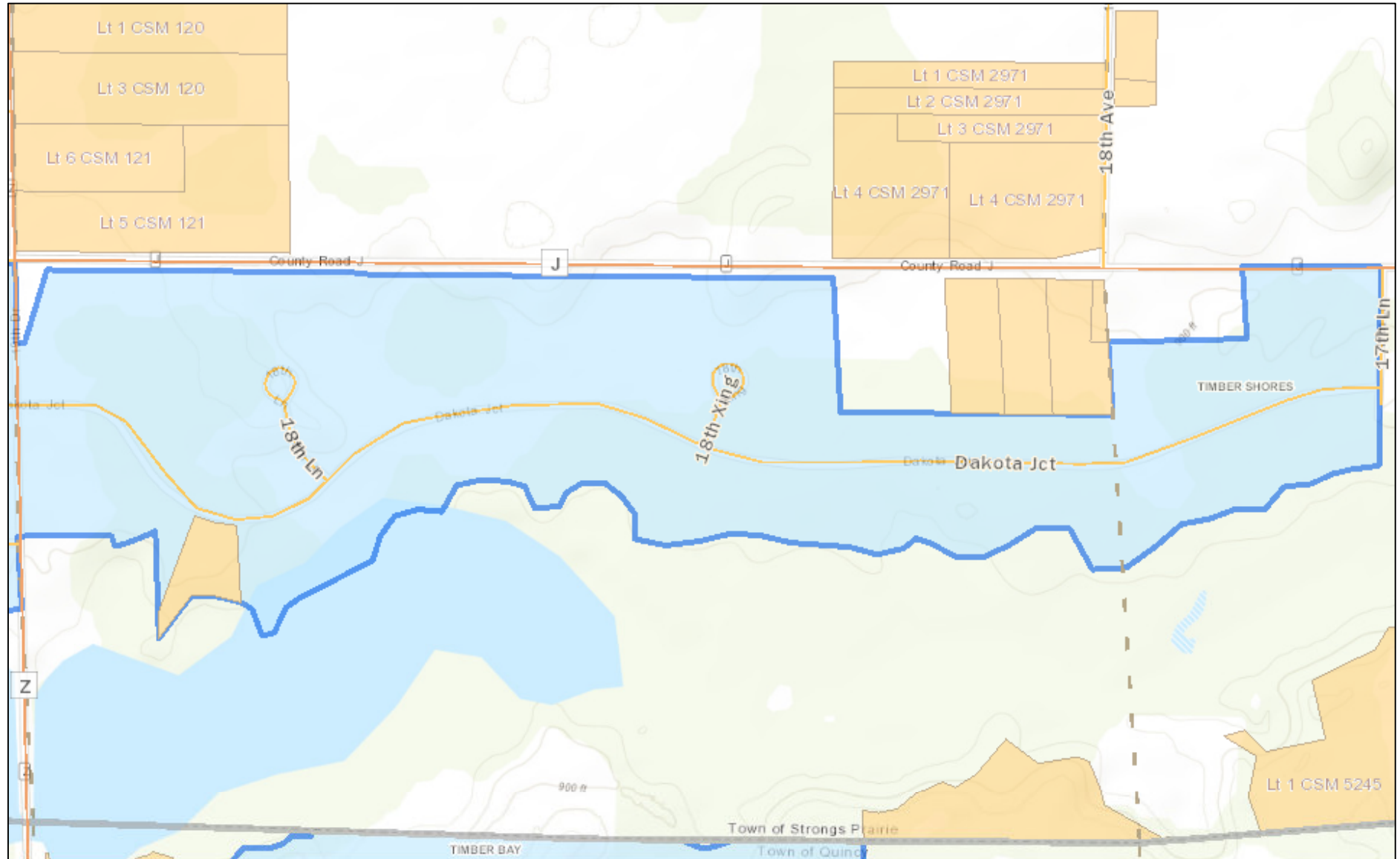
0 0.1 0.2 0.4 mi  
0 0.175 0.35 0.7 km

- |                   |                      |  |
|-------------------|----------------------|--|
| — State Highway   | ▬ Municipal Boundary | <b>Plats</b>   |
| — County Highway  | — Sections           | <span style="border: 1px solid blue; padding: 2px;"> </span> Unrecorded Plat |
| — Local Road      | Section labels       | <span style="border: 2px solid blue; padding: 2px;"> </span> Recorded Plat   |
| — Railroad        | ⛶ Hospital           |  |
| ▭ County Boundary | ▭ Certified Surveys  |  |

DISCLAIMER: This map is for informational purposes and has not been prepared for, nor is it suitable for legal, surveying, or engineering purposes. Users of this information should review or consult the primary data and information sources to ascertain the usability of the information. Adams County makes no warranty or ascertain the usability of the information. Adams County makes no warranty or guarantee as to the content, accuracy, timeliness, or completeness of any of the data provided, and assumes no legal responsibility for the information contained hereon. Copyright 2015, Adams County. All rights reserved.

Sources: Esri, HERE, Garmin, Intermap, increment P Corp., GEBCO, USGS, FAO, NPS, NRCAN, GeoBase, IGN, Kadaster NL, Ordnance Survey, Esri Japan, METI, Esri China (Hong Kong), (c) OpenStreetMap contributors, and the GIS User Community

## Timber Shores 2



9/6/2019, 10:27:07 AM

Esri Canada, Esri, HERE, Garmin, INCREMENT P, Intermap, USGS, METI/NASA, EPA, USDA | Adams Co.

1:11,000

0 0.075 0.15 0.3 mi  
0 0.15 0.3 0.6 km

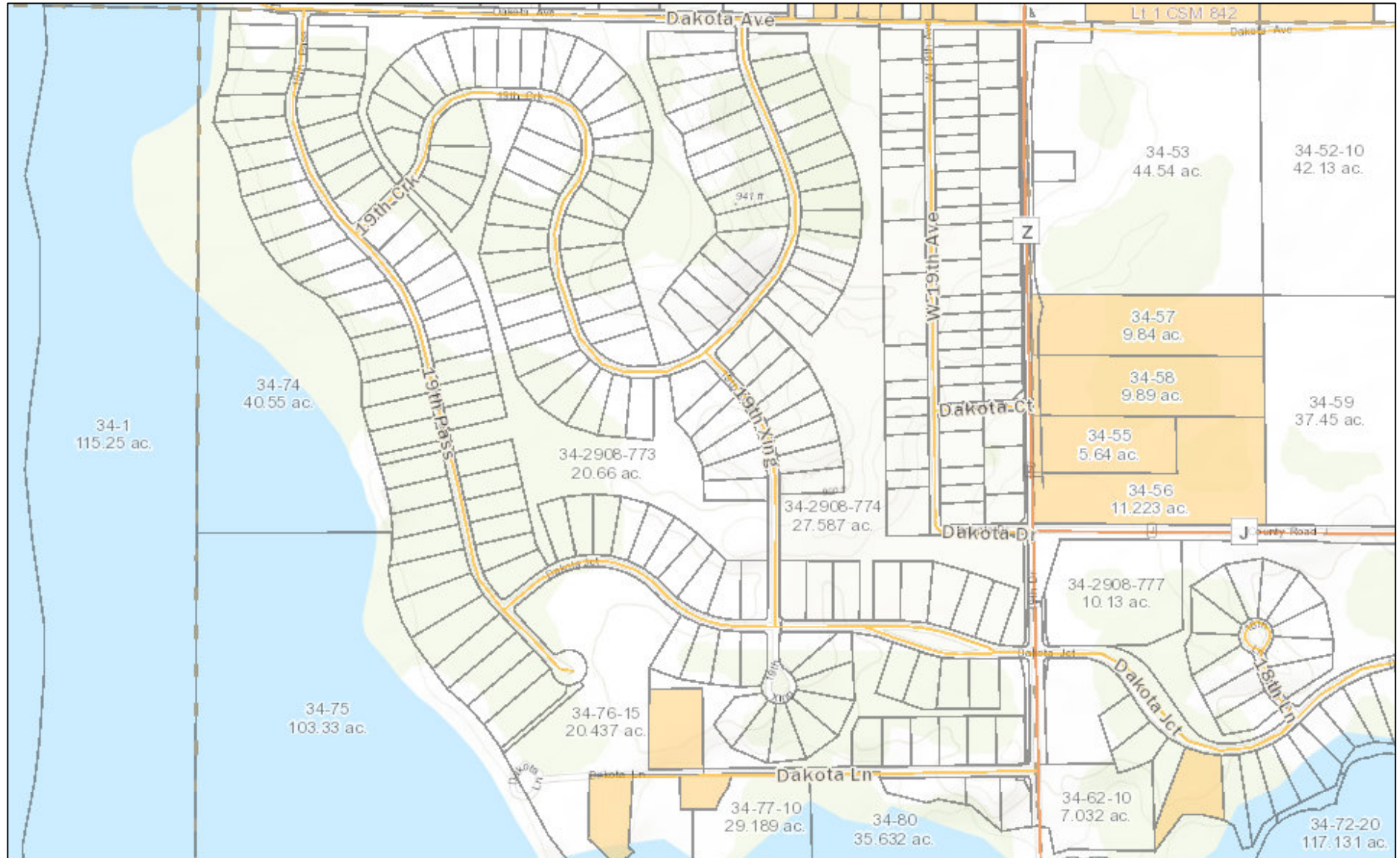
- State Highway
- County Highway
- Local Road
- Railroad
- County Boundary
- Municipal Boundary
- Sections
- Section labels
- Hospital
- Certified Surveys

- Plats**
- Unrecorded Plat
  - Recorded Plat

DISCLAIMER: This map is for informational purposes and has not been prepared for, nor is it suitable for legal, surveying, or engineering purposes. Users of this information should review or consult the primary data and information sources to ascertain the usability of the information. Adams County makes no warranty or ascertain the usability of the information. Adams County makes no warranty or guarantee as to the content, accuracy, timeliness, or completeness of any of the data provided, and assumes no legal responsibility for the information contained hereon. Copyright 2015, Adams County. All rights reserved.

Sources: Esri, HERE, Garmin, Intermap, increment P Corp., GEBCO, USGS, FAO, NPS, NRCAN, GeoBase, IGN, Kadaster NL, Ordnance Survey, Esri Japan, METI, Esri China (Hong Kong), (c) OpenStreetMap contributors, and the GIS User Community

## Timber Shores Lots 1



9/6/2019, 10:30:15 AM

Adams Co.

Esri Canada, Esri, HERE, Garmin, INCREMENT P, Intermap, USGS, METI/NASA, EPA, USDA |

1:13,000

0 0.1 0.2 0.4 mi

0 0.175 0.35 0.7 km

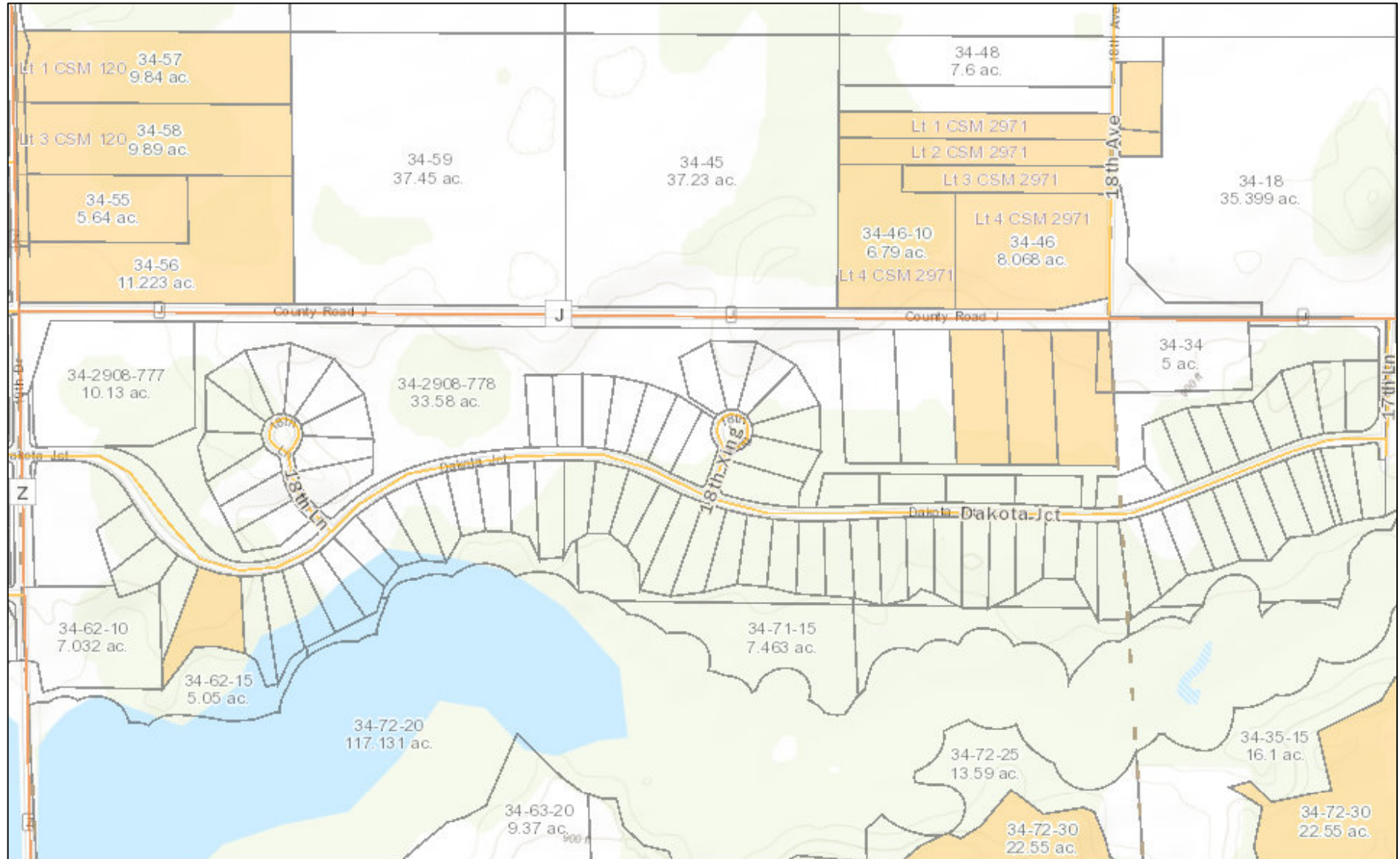
- |                  |                      |                     |
|------------------|----------------------|---------------------|
| — State Highway  | □ County Boundary    | ⊕ Hospital          |
| — County Highway | □ Municipal Boundary | □ Parcel Lines      |
| — Local Road     | — Sections           | ■ Certified Surveys |
| + Railroad       | Section labels       |                     |

DISCLAIMER: This map is for informational purposes and has not been prepared for, nor is it suitable for legal, surveying, or engineering purposes. Users of this information should review or consult the primary data and information sources to ascertain the usability of the information. Adams County makes no warranty or ascertain the usability of the information. Adams County makes no warranty or guarantee as to the content, accuracy, timeliness, or completeness of any of the data provided, and assumes no legal responsibility for the information contained hereon. Copyright 2015, Adams County. All rights reserved.

Sources: Esri, HERE, Garmin, Intermap, increment P Corp., GEBCO, USGS, FAO, NPS, NRCAN, GeoBase, IGN, Kadaster NL, Ordnance Survey, Esri Japan, METI, Esri China (Hong Kong), (c) OpenStreetMap contributors, and the GIS User Community



## Timber Shores Lots 2



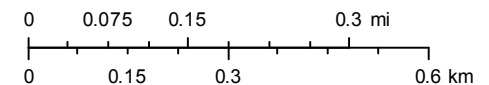
9/6/2019, 10:32:48 AM

- |                  |                      |                     |
|------------------|----------------------|---------------------|
| — State Highway  | □ County Boundary    | ⊕ Hospital          |
| — County Highway | ▣ Municipal Boundary | ▭ Parcel Lines      |
| — Local Road     | — Sections           | ■ Certified Surveys |
| ⊕ Railroad       | Section labels       |                     |

888-696-8695

Esri Canada, Esri, HERE, Garmin, INCREMENT P, Intermap, USGS, METI/NASA, EPA, USDA | Adams Co.

1:11,000



DISCLAIMER: This map is for informational purposes and has not been prepared for, nor is it suitable for legal, surveying, or engineering purposes. Users of this information should review or consult the primary data and information sources to ascertain the usability of the information. Adams County makes no warranty or guarantee as to the content, accuracy, timeliness, or completeness of any of the data provided, and assumes no legal responsibility for the information contained hereon. Copyright 2015, Adams County. All rights reserved.

Sources: Esri, HERE, Garmin, Intermap, increment P Corp., GEBCO, USGS, FAO, NPS, NRCAN, GeoBase, IGN, Kadaster NL, Ordnance Survey, Esri Japan, METI, Esri China (Hong Kong), (c) OpenStreetMap contributors, and the GIS User Community

Landman Realty LLC

TheLandman.net



Timber Shores, WI. Aerial Map - Aerial Photo 2

Aerial Photo of Timber Shores on Castle Rock Lake in Quincy Township of Adams County Central Wisconsin.

Map Disclaimer: Information Displayed on this map was developed from various sources and from available public records. This information is intended for general location purposes only and in support of Chap. 10, Wis. Statutes. Map information verification is the responsibility of the user.





Timber Shores, WI. Aerial Map | Aerial Photo

Aerial Photo of Timber Shores on Castle Rock Lake in Quincy Township of Adams County Central Wisconsin.

Map Disclaimer: Information Displayed on this map was developed from various sources and from available public records. This information is intended for general location purposes only and in support of Chap. 10, Wis. Statutes. Map information verification is the responsibility of the user.



Timber Shores, WI. Aerial Map - Aerial Photo 3

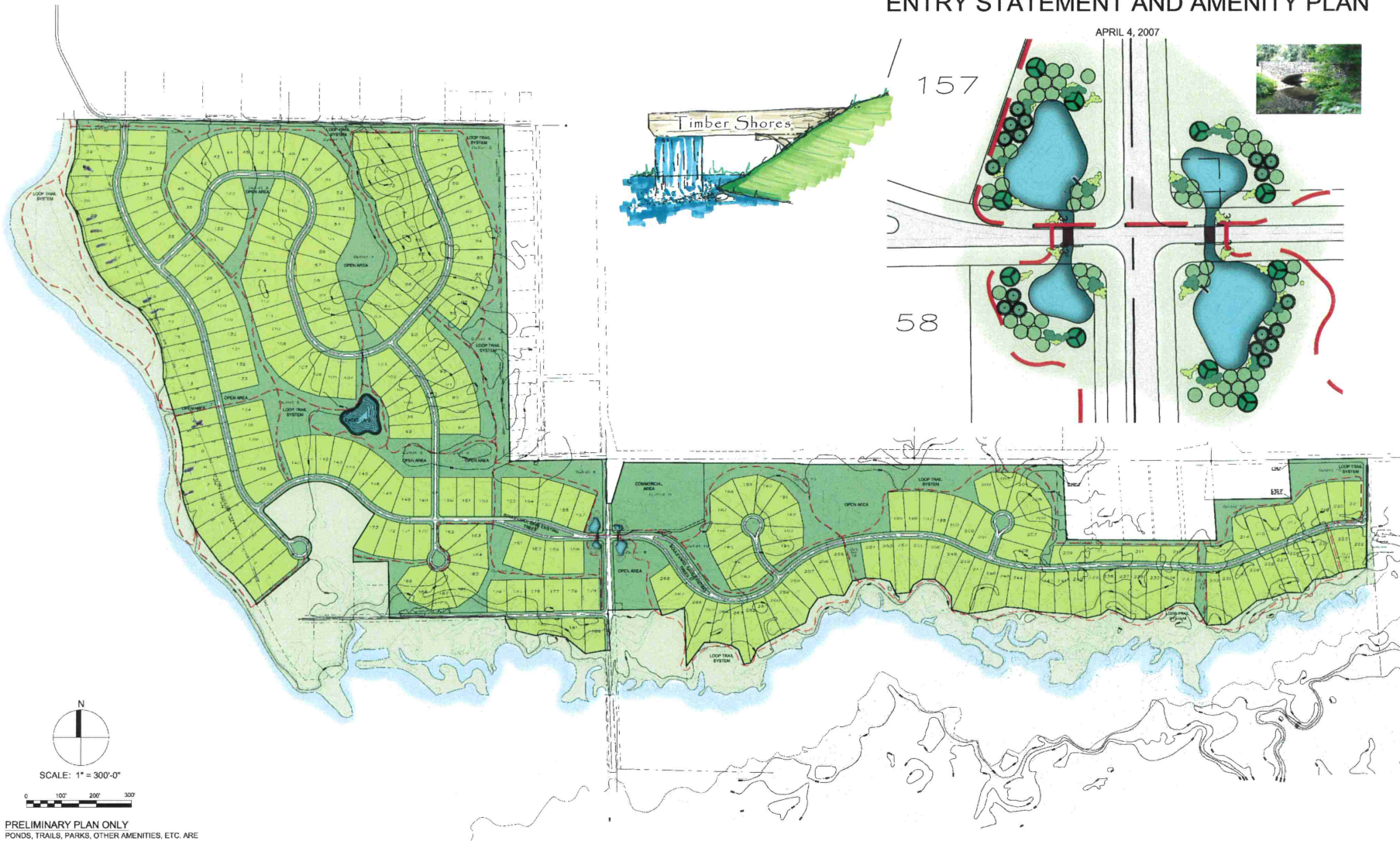
Aerial Photo of Timber Shores on Castle Rock Lake in Quincy Township of Adams County Central Wisconsin.

Map Disclaimer: Information Displayed on this map was developed from various sources and from available public records. This information is intended for general location purposes only and in support of Chap. 10, Wis. Statutes. Map information verification is the responsibility of the user.

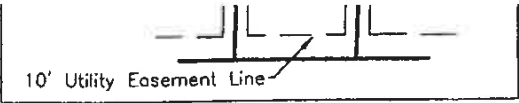


# TIMBER SHORES

## ENTRY STATEMENT AND AMENITY PLAN



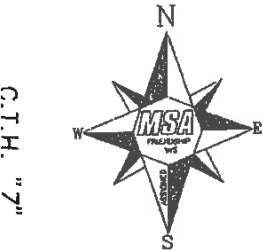
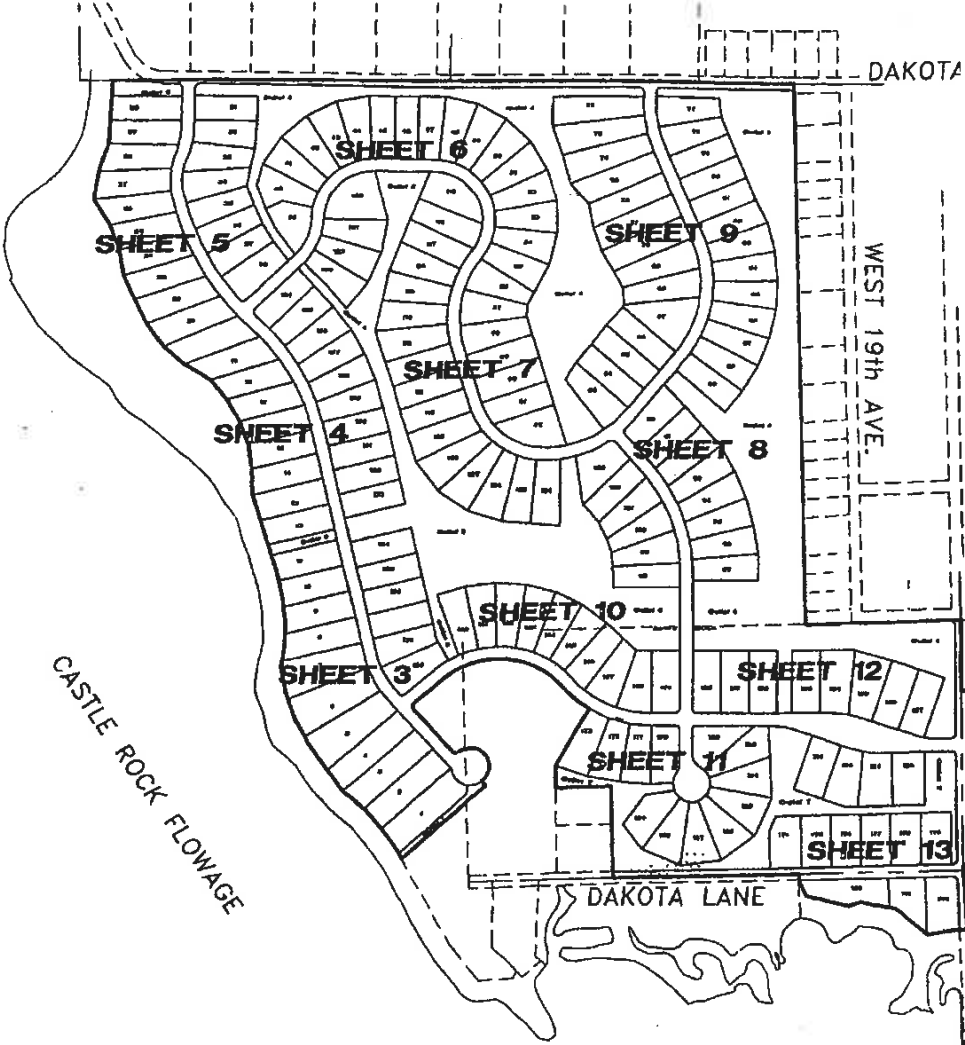




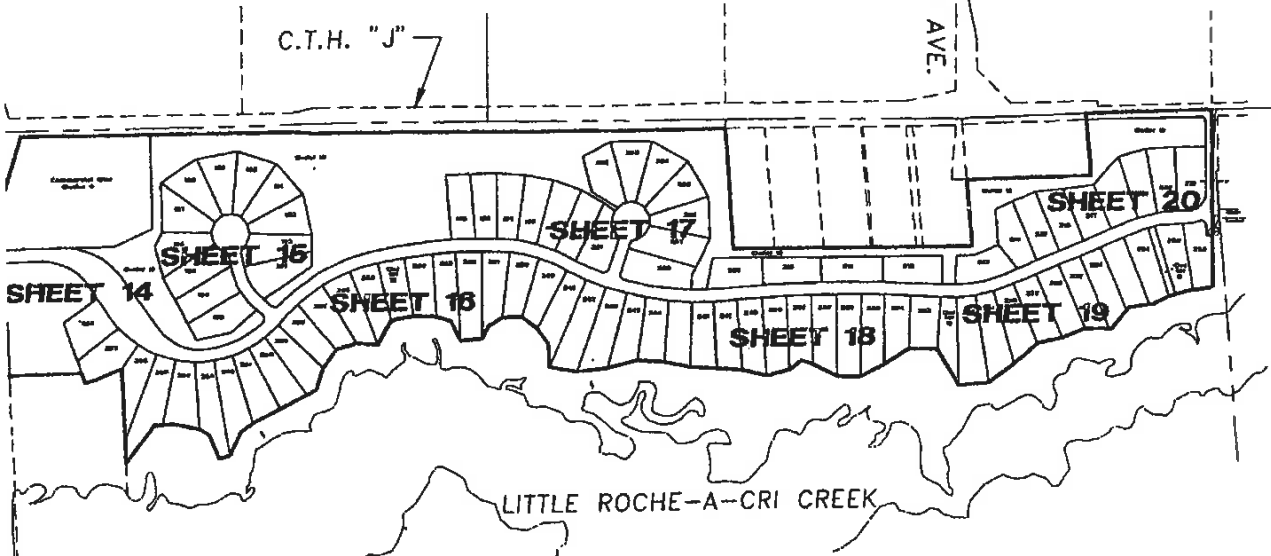
A RESTRICTION IS PLACED ON THIS LOT THAT BUILDINGS FOR HUMAN HABITATION WHICH WILL BE SERVED BY THE INSTALLATION OF SOIL ABSORPTION SYSTEMS FOR SEPTIC TANK EFFLUENT DISPOSAL ON ANY OUTLOT IN THIS SUBDIVISION. THIS RESTRICTION APPLIES TO ALL OUTLOTS EXCEPT OUTLOT 9.

PERSONALLY CAME BEFORE ME THIS 16<sup>th</sup> DAY OF JUNE, 2007, THE ABOVE NAMED TO ME KNOWN TO BE THE PERSON WHO EXECUTED THE FOREGOING INSTRUMENT AND TO ME KNOWN TO BE SUCH SENIOR VICE-PRESIDENT AND ~~VICE PRESIDENT~~ OF SAID CORPORATION AND ACKNOWLEDGED THAT HE EXECUTED THE FORGOING INSTRUMENT AS THE DEED OF SAID CORPORATION, BY ITS AUTHORITY.

NOTARY PUBLIC, Hennepin CO. Minnesota  
Rebecca L. Knudsen MY COMMISSION EXPIRES January 31, 2012



TIMBER SHORES  
SEE THE FOLLOWING PAGES FOR FURTHER DETAIL



2 of 20  
SHEET

FILE NO.  
335643B

The Nature of Life

PLAT OF  
**TIMBER SHORES**  
SECTION 4, 5, 6, TOWNSHIP 17 NORTH, RANGE 5 EAST  
TOWN OF STRONGS PRAIRIE, ADAMS COUNTY, WISCONSIN

DRAWING NO.	splash.dwg
DRAWN BY.	JAS
CHECKED BY.	GPR

DATE	NO.	REVISION DATE	BY
APRIL 24, 2007	1	MAY 11, 2007	JAS
SCALE: 1" = 100'			

PROFESSIONAL SERVICES

TRANSPORTATION • MUNICIPAL • REMEDIATION  
DEVELOPMENT • ENVIRONMENTAL  
P O Box 349 Friendship, WI 53934-0349  
608-339-3808 Fax: 608-339-8071  
© 2007 MSA Professional Services, Inc.