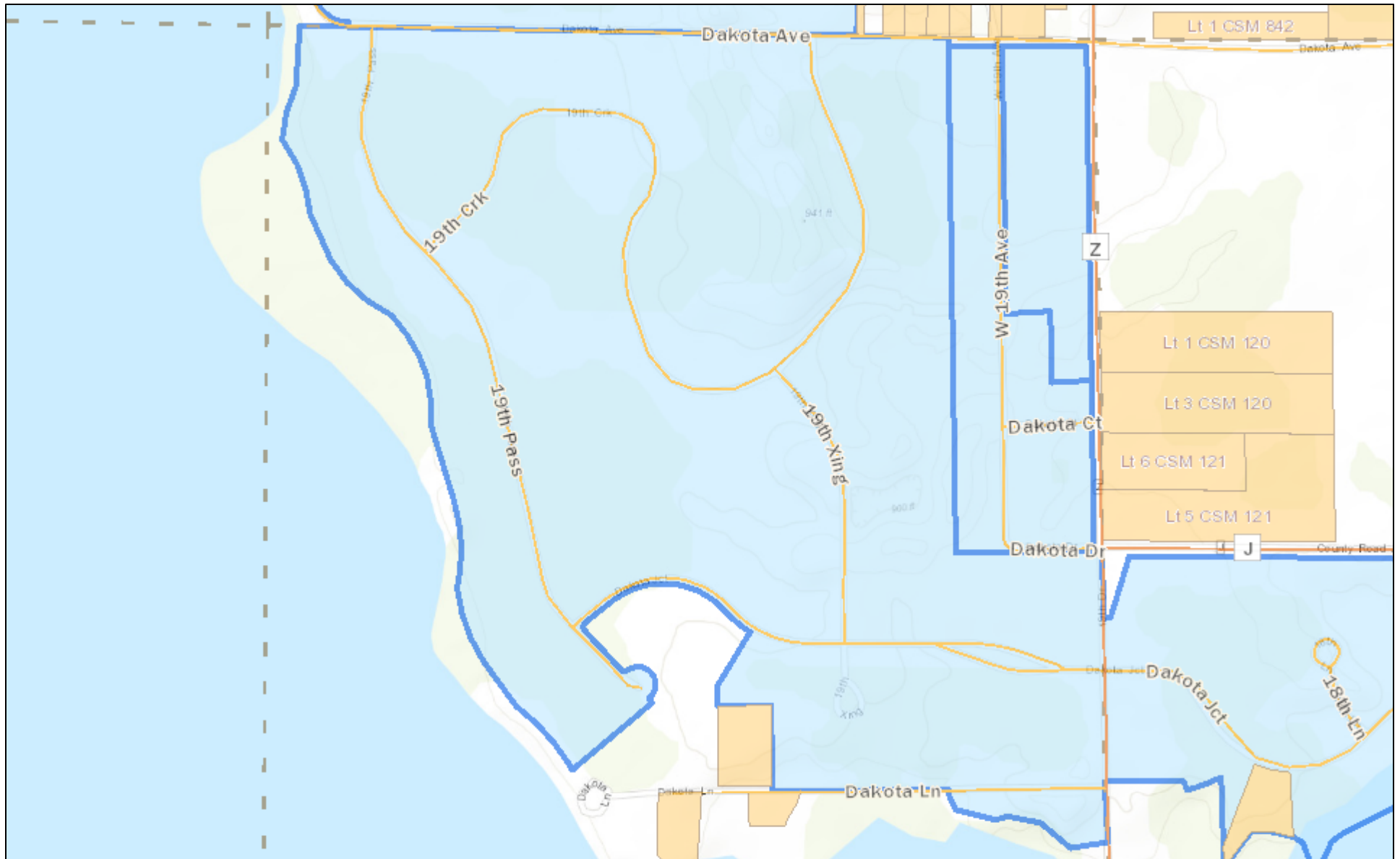


Timber Shores 1

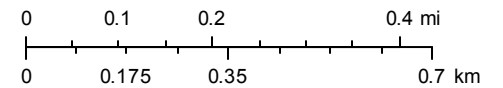


9/6/2019, 10:28:20 AM

- | | | | | |
|--|-----------------|--|--------------------|-----------------|
| | State Highway | | Municipal Boundary | Plats |
| | County Highway | | Sections | |
| | Local Road | | Section labels | |
| | Railroad | | Hospital | |
| | County Boundary | | Certified Surveys | |
| | | | | Unrecorded Plat |
| | | | | Recorded Plat |

Esri Canada, Esri, HERE, Garmin, INCREMENT P, Intermap, USGS, METI/NASA, EPA, USDA | Adams Co.

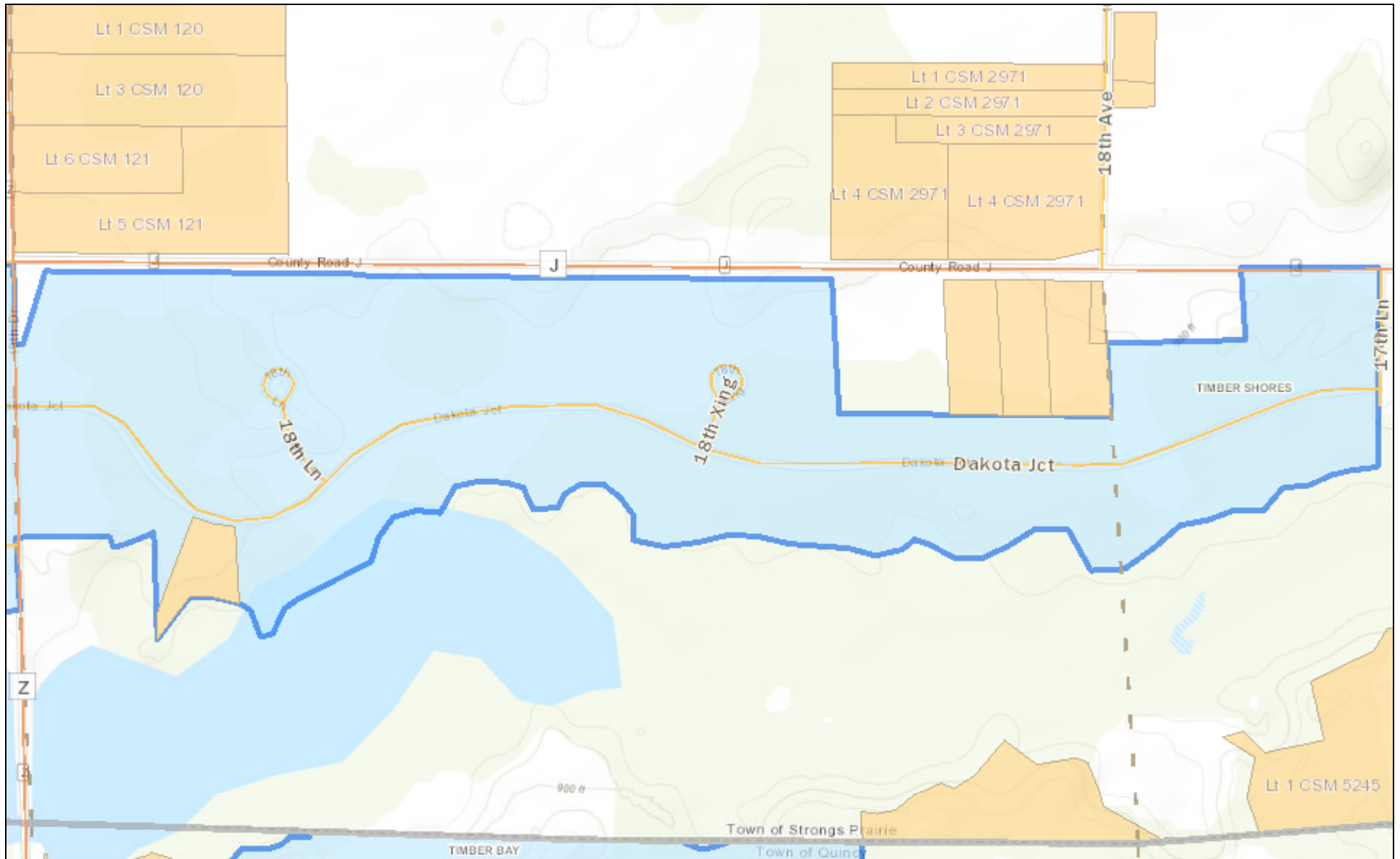
1:13,000



DISCLAIMER: This map is for informational purposes and has not been prepared for, nor is it suitable for legal, surveying, or engineering purposes. Users of this information should review or consult the primary data and information sources to ascertain the usability of the information. Adams County makes no warranty or ascertain the usability of the information. Adams County makes no warranty or guarantee as to the content, accuracy, timeliness, or completeness of any of the data provided, and assumes no legal responsibility for the information contained hereon. Copyright 2015, Adams County. All rights reserved.

Sources: Esri, HERE, Garmin, Intermap, increment P Corp., GEBCO, USGS, FAO, NPS, NRCAN, GeoBase, IGN, Kadaster NL, Ordnance Survey, Esri Japan, METI, Esri China (Hong Kong), (c) OpenStreetMap contributors, and the GIS User Community

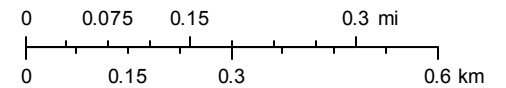
Timber Shores 2



9/6/2019, 10:27:07 AM

Esri Canada, Esri, HERE, Garmin, INCREMENT P, Intermap, USGS, METI/NASA, EPA, USDA | Adams Co.

1:11,000

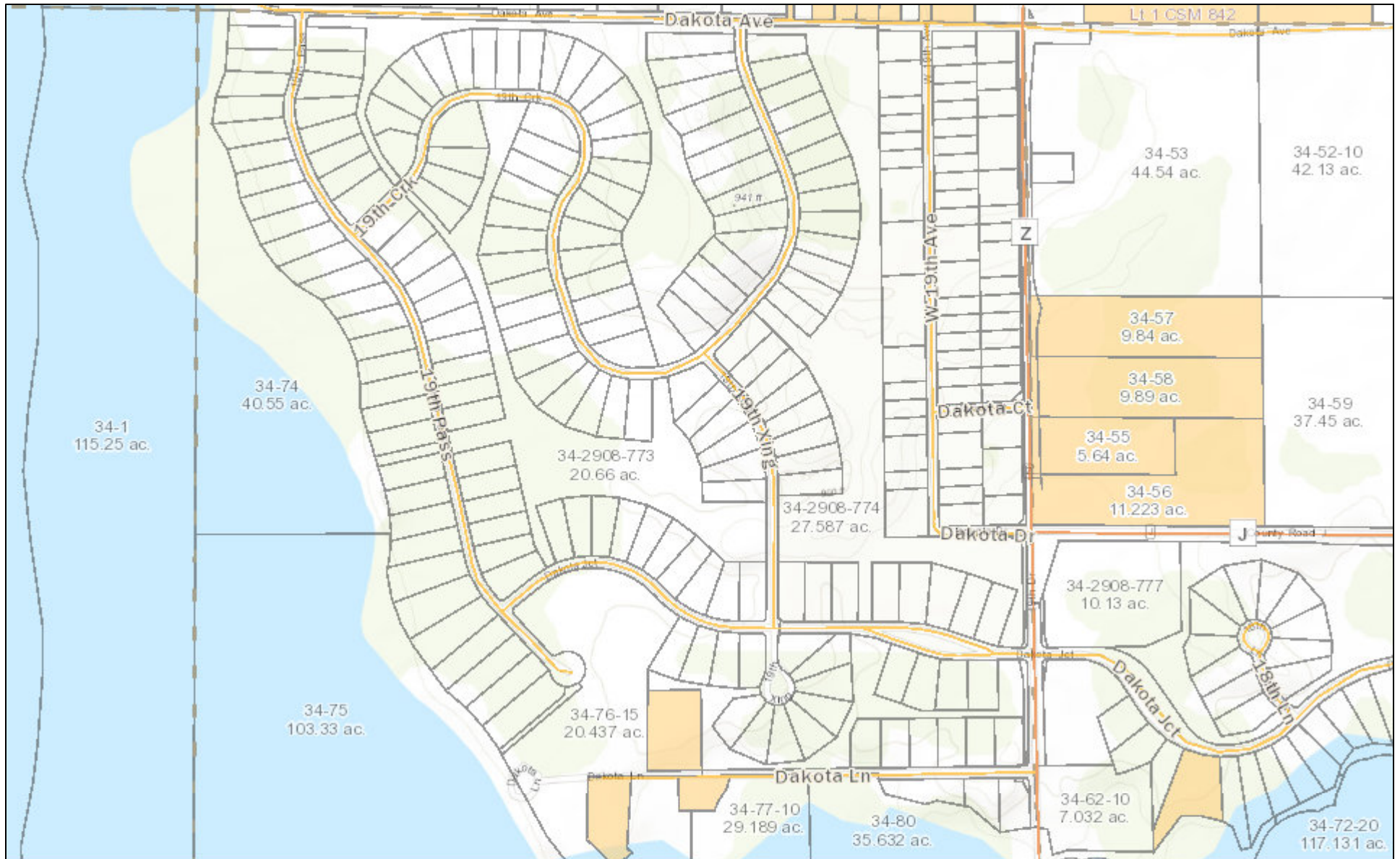


- | | | |
|-----------------|--------------------|-----------------|
| State Highway | Municipal Boundary | Plats |
| County Highway | Sections | Unrecorded Plat |
| Local Road | Section labels | Recorded Plat |
| Railroad | Hospital | |
| County Boundary | Certified Surveys | |

DISCLAIMER: This map is for informational purposes and has not been prepared for, nor is it suitable for legal, surveying, or engineering purposes. Users of this information should review or consult the primary data and information sources to ascertain the usability of the information. Adams County makes no warranty or ascertain the usability of the information. Adams County makes no warranty or guarantee as to the content, accuracy, timeliness, or completeness of any of the data provided, and assumes no legal responsibility for the information contained hereon. Copyright 2015, Adams County. All rights reserved.

Sources: Esri, HERE, Garmin, Intermap, increment P Corp., GEBCO, USGS, FAO, NPS, NRCAN, GeoBase, IGN, Kadaster NL, Ordnance Survey, Esri Japan, METI, Esri China (Hong Kong), (c) OpenStreetMap contributors, and the GIS User Community

Timber Shores Lots 1

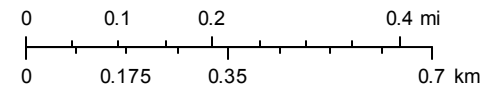


9/6/2019, 10:30:15 AM

- | | | |
|----------------|--------------------|-------------------|
| State Highway | County Boundary | Hospital |
| County Highway | Municipal Boundary | Parcel Lines |
| Local Road | Sections | Certified Surveys |
| Railroad | Section labels | |

Esri Canada, Esri, HERE, Garmin, INCREMENT P, Intermap, USGS, METI/NASA, EPA, USDA | Adams Co.

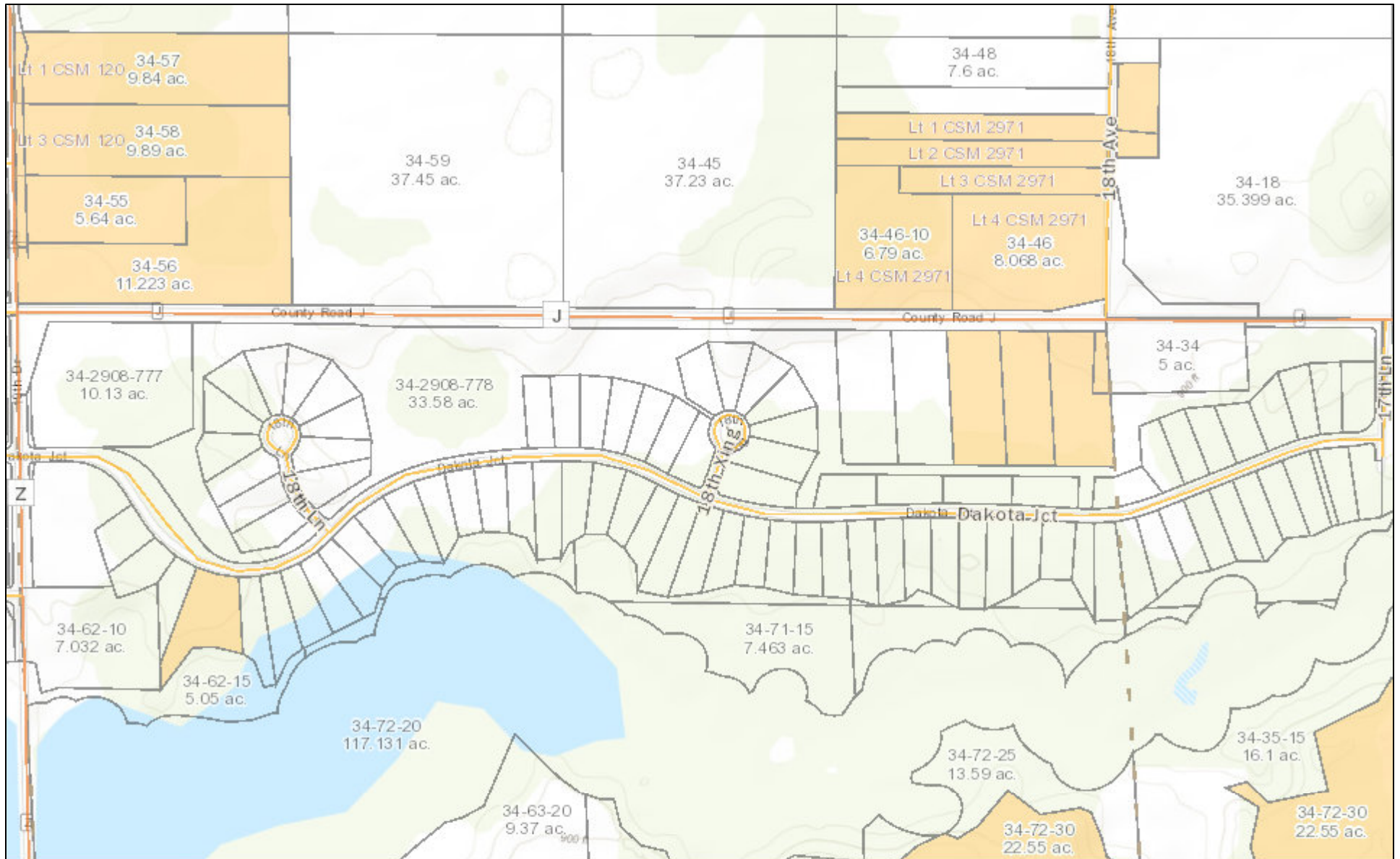
1:13,000



DISCLAIMER: This map is for informational purposes and has not been prepared for, nor is it suitable for legal, surveying, or engineering purposes. Users of this information should review or consult the primary data and information sources to ascertain the usability of the information. Adams County makes no warranty or ascertain the usability of the information. Adams County makes no warranty or guarantee as to the content, accuracy, timeliness, or completeness of any of the data provided, and assumes no legal responsibility for the information contained hereon. Copyright 2015, Adams County. All rights reserved.

Sources: Esri, HERE, Garmin, Intermap, increment P Corp., GEBCO, USGS, FAO, NPS, NRCAN, GeoBase, IGN, Kadaster NL, Ordnance Survey, Esri Japan, METI, Esri China (Hong Kong), (c) OpenStreetMap contributors, and the GIS User Community

Timber Shores Lots 2

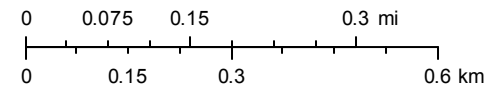


9/6/2019, 10:32:48 AM

- | | | |
|----------------|--------------------|-------------------|
| State Highway | County Boundary | Hospital |
| County Highway | Municipal Boundary | Parcel Lines |
| Local Road | Sections | Certified Surveys |
| Railroad | Section labels | |

Esri Canada, Esri, HERE, Garmin, INCREMENT P, Intermap, USGS, METI/NASA, EPA, USDA | Adams Co.

1:11,000



DISCLAIMER: This map is for informational purposes and has not been prepared for, nor is it suitable for legal, surveying, or engineering purposes. Users of this information should review or consult the primary data and information sources to ascertain the usability of the information. Adams County makes no warranty or ascertain the usability of the information. Adams County makes no warranty or guarantee as to the content, accuracy, timeliness, or completeness of any of the data provided, and assumes no legal responsibility for the information contained hereon. Copyright 2015, Adams County. All rights reserved.

Sources: Esri, HERE, Garmin, Intermap, increment P Corp., GEBCO, USGS, FAO, NPS, NRCAN, GeoBase, IGN, Kadaster NL, Ordnance Survey, Esri Japan, METI, Esri China (Hong Kong), (c) OpenStreetMap contributors, and the GIS User Community



Timber Shores, WI. Aerial Map - Aerial Photo 2

Aerial Photo of Timber Shores on Castle Rock Lake in Quincy Township of Adams County Central Wisconsin.

Map Disclaimer: Information Displayed on this map was developed from various sources and from available public records. This information is intended for general location purposes only and in support of Chap. 10, Wis. Statutes. Map information verification is the responsibility of the user.



Timber Shores, WI. Aerial Map | Aerial Photo

Aerial Photo of Timber Shores on Castle Rock Lake in Quincy Township of Adams County Central Wisconsin.

Map Disclaimer: Information Displayed on this map was developed from various sources and from available public records. This information is intended for general location purposes only and in support of Chap. 10, Wis. Statutes. Map information verification is the responsibility of the user.



Timber Shores, WI. Aerial Map - Aerial Photo 3

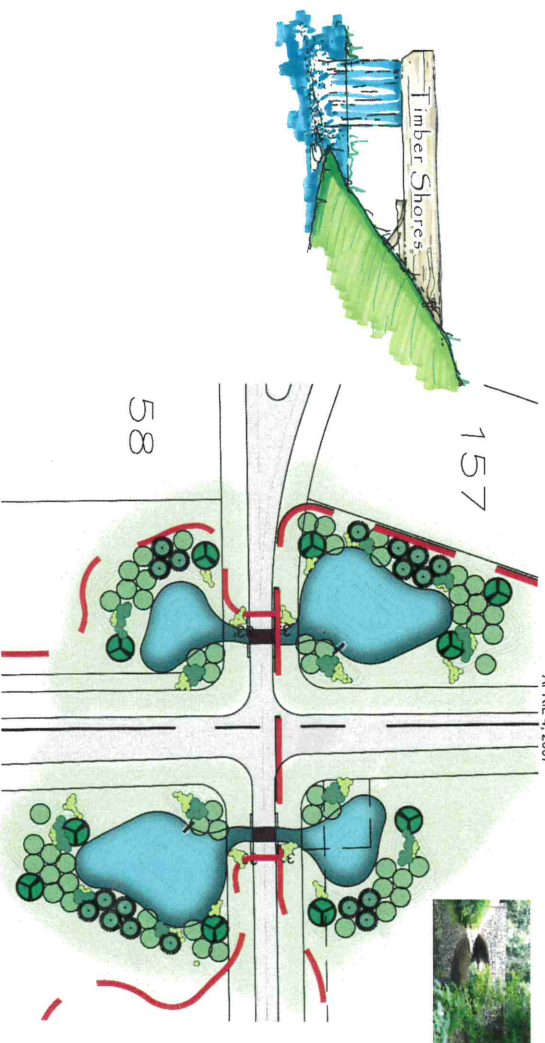
Aerial Photo of Timber Shores on Castle Rock Lake in Quincy Township of Adams County Central Wisconsin.

Map Disclaimer: Information Displayed on this map was developed from various sources and from available public records. This information is intended for general location purposes only and in support of Chap. 10, Wis. Statutes. Map information verification is the responsibility of the user.

TIMBER SHORES

ENTRY STATEMENT AND AMENITY PLAN

APRIL 4, 2007



SCALE: 1" = 300'-0"

0 100' 200' 300'

PRELIMINARY PLAN ONLY

POUNDS, TRAILS, PARKS, OTHER AMENITIES, ETC. ARE
LOCATIONS MUST BE APPROVED BY OUR ENGINEERS. ALL
LOCATIONS MUST BE VERIFIED IN THE FIELD.

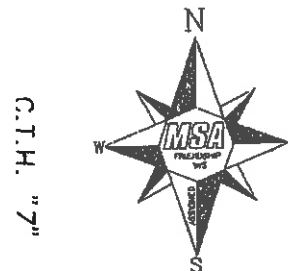
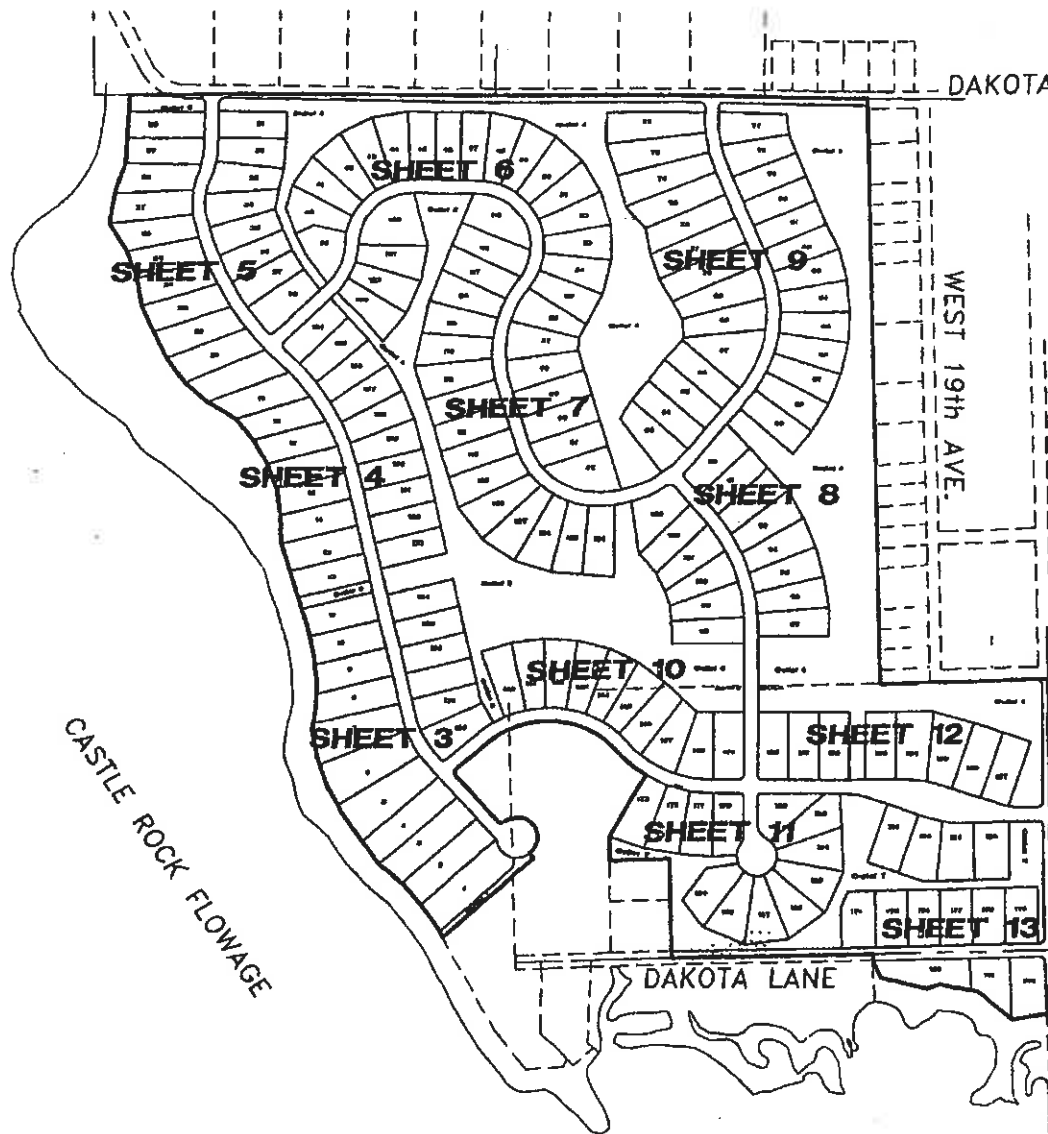
© 2007 RETTLER CORPORATION

10' Utility Easement Line

A RESTRICTION IS PLACED ON THIS LOT WHICH PROHIBITS THE ERECTION OF ANY BUILDINGS FOR HUMAN HABITATION WHICH WILL BE SERVED BY THE INSTALLATION OF SOIL ABSORPTION SYSTEMS FOR SEPTIC TANK EFFLUENT DISPOSAL ON ANY OUTLOT IN THIS SUBDIVISION. THIS RESTRICTION APPLIES TO ALL OUTLOTS EXCEPT OUTLOT 9.

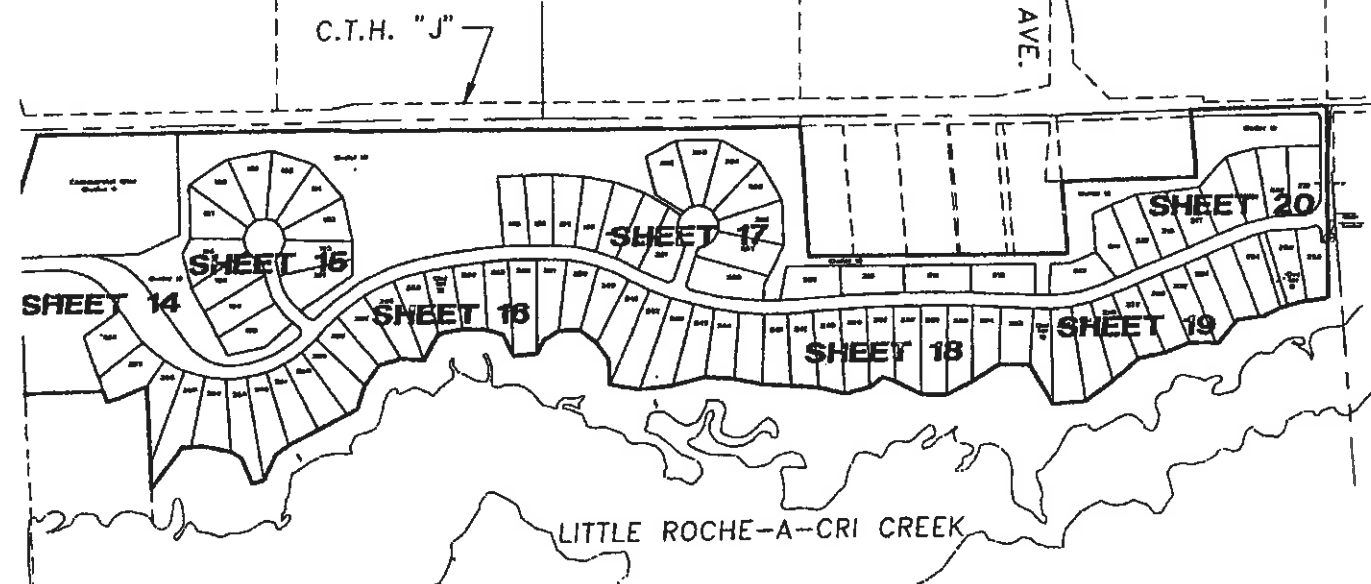
PERSONALLY CAME BEFORE ME THIS 21st DAY OF JUNE 2007, THE ABOVE NAMED TO ME KNOWN TO BE THE PERSON WHO EXECUTED THE FOREGOING INSTRUMENT AND TO ME KNOWN TO BE SUCH SENIOR VICE-PRESIDENT AND VICE PRESIDENT OF SAID CORPORATION AND ACKNOWLEDGED THAT HE EXECUTED THE FOREGOING INSTRUMENT AS THE DEED OF SAID CORPORATION, BY ITS AUTHORITY.

NOTARY PUBLIC, Hennepin CO. Minnesota
Rebecca L. Knudsen MY COMMISSION EXPIRES January 31, 2012



TIMBER SHORES

SEE THE FOLLOWING PAGES FOR FURTHER DETAIL



2 of 20

SHEET

FILE NO.
333643B



PLAT OF
TIMBER SHORES
 SECTION 4, 5, 6, TOWNSHIP 17 NORTH, RANGE 5 EAST
 TOWN OF STRONGS PRAIRIE, ADAMS COUNTY, WISCONSIN

DRAWING NO splash.dwg
 DRAWN BY JAS
 CHECKED BY GPR

DATE	NO.	REVISION DATE	BY
APRIL 24, 2007	1	MAY 11, 2007	JAS

SCALE: 1" = 100'



TRANSPORTATION • MUNICIPAL • REMEDIATION
 DEVELOPMENT • ENVIRONMENTAL
 P O Box 349 Friendship, WI 53934-0349
 608-339-3808 Fax: 608-339-8071
 © 2007 MSA Professional Services, Inc.